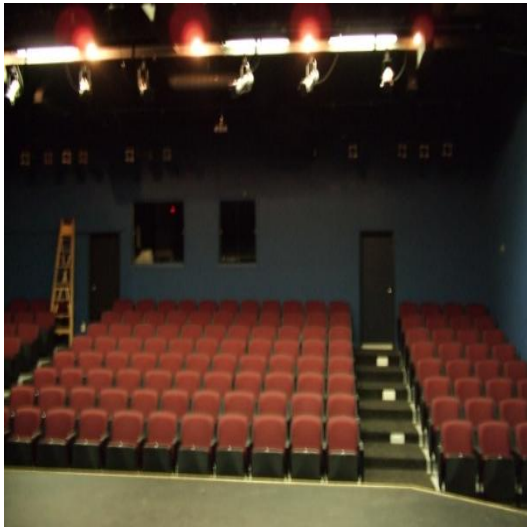


What we offer,

The Centennial Auditorium has provided a stage to our community's talents for the past 23 years.

In 1987 The Asparagus Theatre Company built a 160-seat theatre onto the existing Centennial Hall.

In 2009 the seating was updated to larger more comfortable seats which now hold 141 people, and have space allocated for wheelchairs.



For Rates

Call the office at

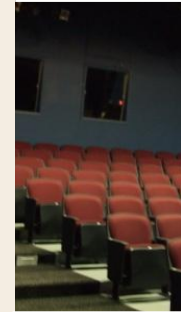
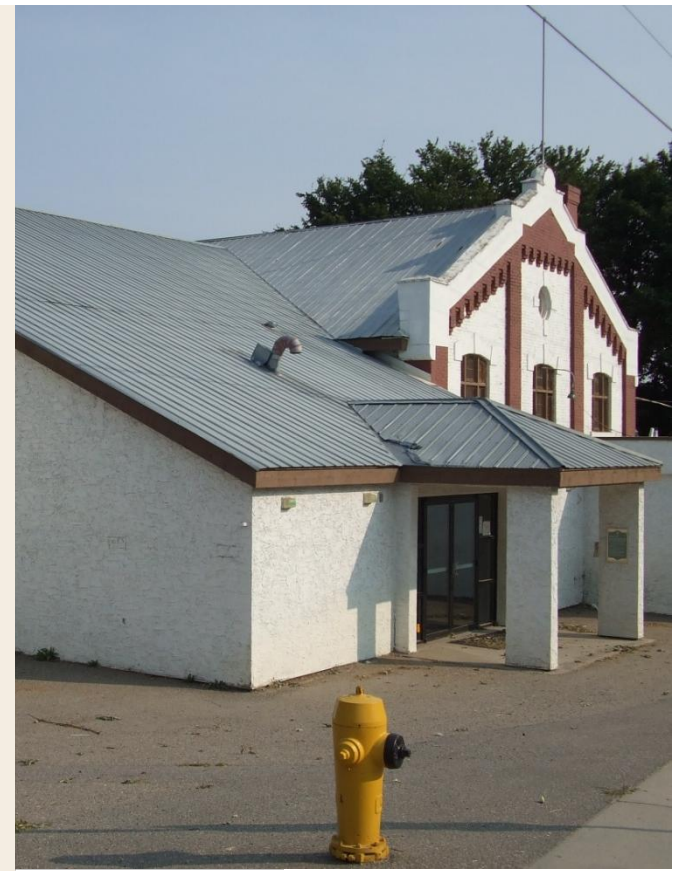
250-546-9456

Let us introduce Ourselves!

*Armstrong
Spallumcheen Parks
& Recreation
Commission has been
serving the Armstrong
& Spallumcheen Area
since 1977!*

Contact us at
250-546-9456
Or info@asprd.com

Centennial Auditorium is located
at:
3305 Pleasant Valley Rd
Armstrong, BC



Armstrong - Spallumcheen

*Centennial
Auditorium*



Armstrong Spallumcheen Parks & Recreation

Centennial Auditorium Facility Features

Stage with curtains

Lighting

Theatre Seating

Retractable White Screen

LCD Projector

Performance Sound Booth

Air Conditioning

Wheelchair Access and Reserved Seating

Lobby with Concession Area

Public Wifi

Facility Specs

Available Power output	15amp/120v
Maximum Legal Capacity	200 ppl
Footing	Carpet
Seating	141 fixed seats
Wheelchair accessibility	Yes
Wifi	Yes



Armstrong Spallumcheen Parks & Recreation

Parks & Recreation Main Office >>>

3351 Park Drive. Located inside the
Sunbelt Arena